

ACT-AC-WW

Operation manual



CONTENTS

NO.1 Design Specification ————— P1-7

Internal Connection
Note

NO.2 Software operation ————— P8-13

Preoperation inspection
Power on the equipment
System configuration
About business card printing

NO.3 Common problems and solutions of charging pile ————— P15-17

01

Design Specification

1.1 Internal Connection

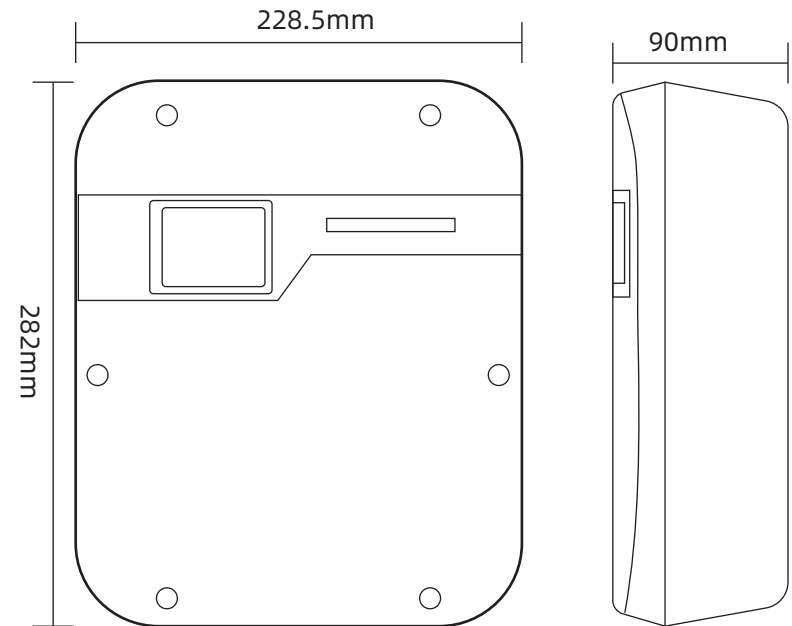
1.1.1 Input Wiring Steps

1.2 Note

1.2.1 Connection Mode

Use of
Charging Pile

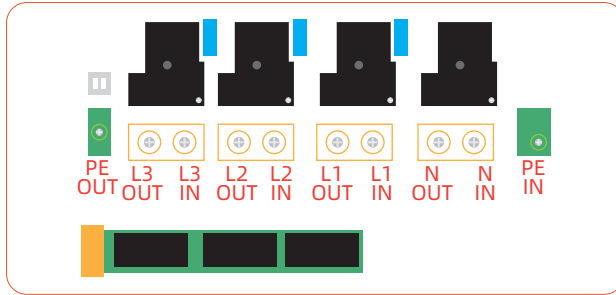
Item		Specification
Name	AC 7kW/11kW/22kW EV Charger	
Environment	Temperature	-30°C to +55°C
	Humidity	5% to 95% no Congeal
	Altitude Height	2000M
	Noise Control	Less than 30db
	Size	23*28*9 cm
Electrical Specification	Input Voltage	1/N/PE~230V Or 3N/PE-230-400V
	Input Frequency	50Hz
	The Max Power	7kW/11kW/22kW
	Relay Specification	50A 250VA
	Rated Output	Single Connector max Output
	Cable Length	5 meter Output Cable, no Input Cable in Default
Structure	Charging Method	RFID Card/Plug and ChargeAPP/ReservationCharging
	Application	Indoor/Outdoor
	Load Balance	CT+Single/Three Phase Meter
	OCP	4G/Ethernet



1.1 Internal Connection

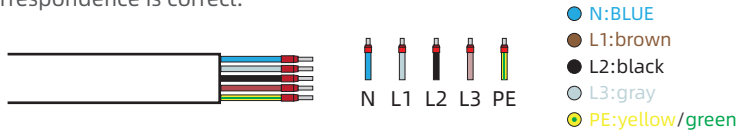
1.1.1 Input Wiring Steps

Step 1: Open the shell of the charging station and check the input interface of the circuit board. The image without wiring is as follows.

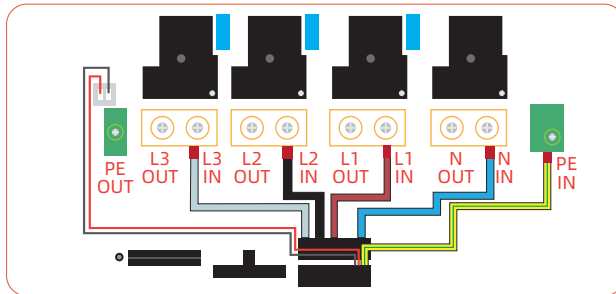


No Connection

Step 2: Check the prefabricated input cable and confirm that the phase correspondence is correct.



Step 3: Check the prefabricated input cable and confirm that the phase correspondence is correct.



NOTE:

Just connect L1 wire for single phase ev charger.

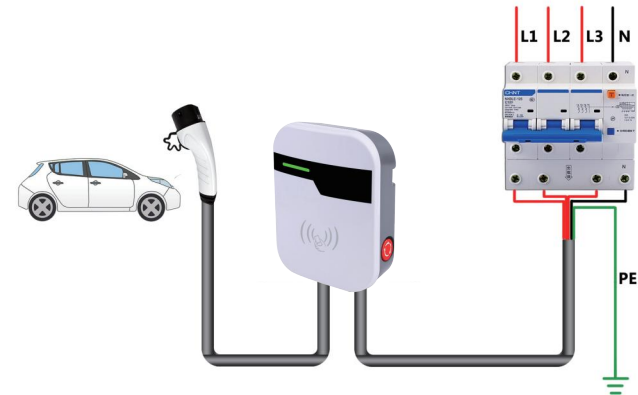
1.2 Note

After Wiring is Completed:

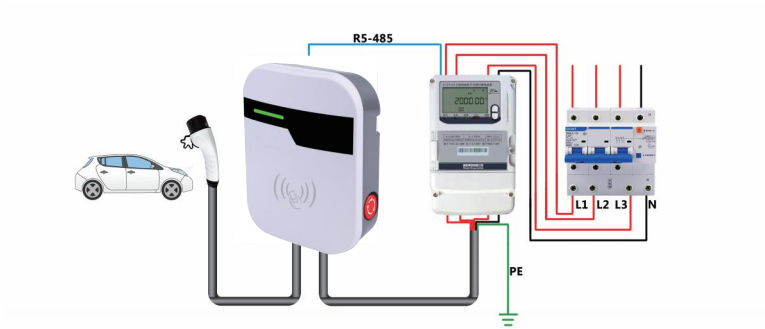
- 1) Tighten the screws at the wiring point, gently pull them out without loosening;
- 2) Some wires are reserved inside the junction box of the Charging station to prevent the wires from extra tension;
- 4) The cables at the input end and output end shall be kept vertical outside the Charging station;
- 7) Confirm that the rear cover of the Charging station housing is correct.
- 6) Check again if there are any abnormalities at each wiring point;
- 3) Excess wires can be properly bent and neatly organized;
- 5) Tighten the external fasteners of the input and output terminals clockwise;
- 6) Check again if there are any abnormalities at each wiring point;
- 7) Confirm that the rear cover of the Charging station housing is correct.

1.2.1 Connection Mode

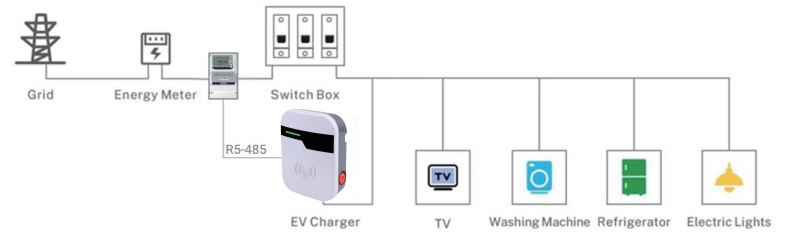
1.Normal Connection



2.Connection by External Metering

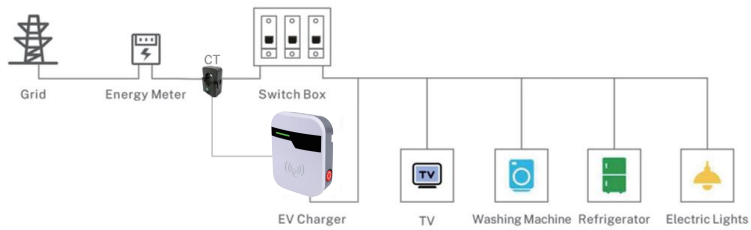


By Electric Meter

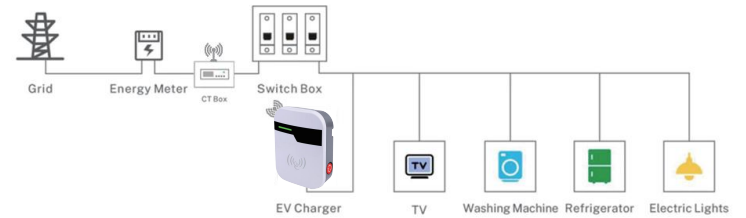


3.Connection by Load Balancing

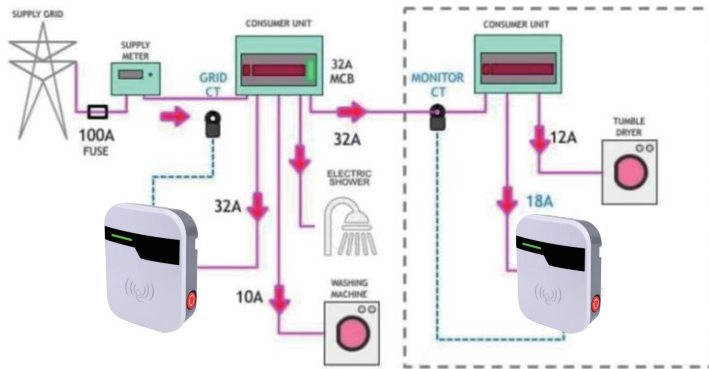
By CT



By Wireless CT



Dynamic Load Balancing



02

Software operation

- 2.1 Preoperation inspection
- 2.2 Power on the equipment
- 2.3 System configuration
 - 2.3.1 Add device
 - 2.3.2 Equipment configuration
- 2.4 About business card printing

Use of
Charging Pile

2.1 Preoperation inspection

Before operation, please carefully check and ensure the following items:

- The installation location of the charging pile is convenient for operation and maintenance;
- The charging pile is correctly connected to the accessories and installed firmly;
- The selection and installation of AC incoming leakage protection circuit breakers are reasonable;
- The charging pile accessories are complete and the charging gun is in the hung state.

2.2 Power on the equipment

After all pre-operation inspection items meet the requirements, close the power supply inlet leakage protection circuit breaker, and observe the status of the LED indicator light after power-on is complete.

Normal standby: green light is always on

Charging status: blue light is always on

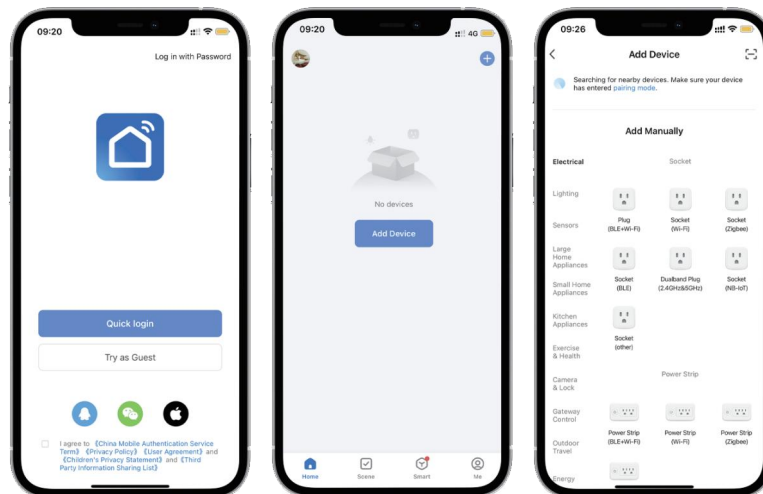
Equipment fault: red light is always on

2.3 System configuration

After the charging pile is powered on normally, configure the relevant parameters through the mobile phone APP, download the "Smart Life" APP from the mobile phone mall, install it, open the APP, register and log in, and enter the APP configuration interface.

2.3.1 Add device

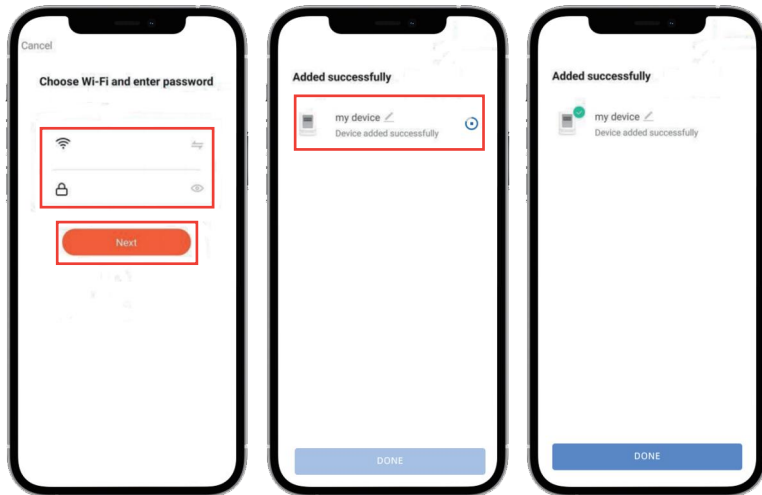
Open the app, log in, enter the add device interface, turn on your phone's WIFI and Bluetooth, search for charging pile devices, and click the add button after finding the device.



Click the Add button to jump to the WiFi configuration interface, select a good WiFi (try to choose 2.4GHz band), enter the password, click the Next button, enter the add interface, it takes about 1 minute, and then the add is completed.

NOTE:

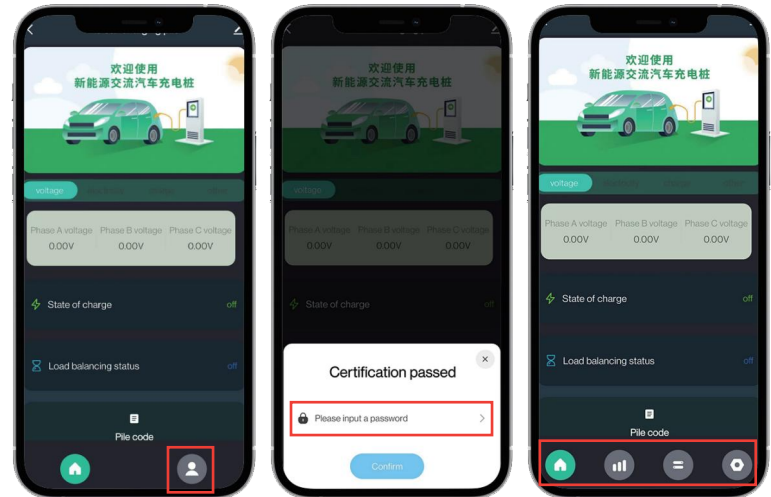
If there is no WiFi on site, turn on the hotspot on your phone, and then connect another phone to this hotspot to configure the WiFi of the charging pile. Alternatively, you can configure it in a place with WiFi and ship it to the installation site.



2.3.2 Equipment configuration

After adding the device, enter the charging pile data configuration and status display interface, which displays the voltage, current, charging capacity, amount, balance, charging status, pile code, etc. Click the authentication button in the lower right corner and enter the password 888888. After passing the authentication, enter the charging pile data configuration interface. There are three configuration buttons

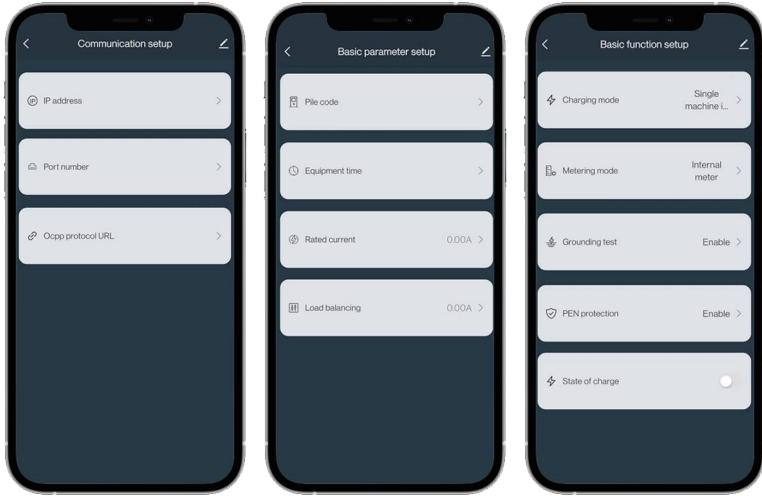
below: communication data configuration, basic parameter configuration, and basic function configuration.



Communication data configuration: configure OCPP protocol, TLS encryption, APN, APN user name, APN user password;

Basic parameter configuration: configure the pile code (multiple piles with different names), device time, pile rated current, load balancing current, electricity card authorization, and QR code prefix;

Basic function configuration: configuration of charging mode, metering mode, grounding test, PEN protection, charging status, charging plan, and network mode.



NOTE:

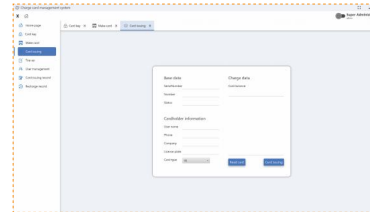
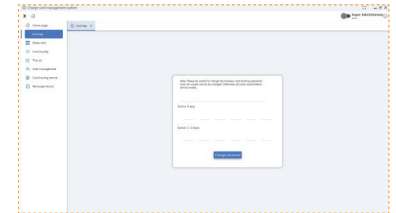
It is only necessary to configure the charging pile once for the APP. When you encounter the following situations, you need to reconfigure it:

- (1) The WiFi account or password connected to the device has been changed;
- (2) If you delete the device in the APP, you need to reconfigure it when reconnecting.

2.4 About business card printing

Our company has professional business card printing tools. The following figure shows our business card printing software and card reader. You can use the business card printing tools to view and set up charging cards: business card printing keys, recharge, user management, card issuing records, recharge records, and more.

Click on the upper right corner of the main interface to enter the management portal, enter the administrator password, and then click on "Basic Function" to enter the Basic Function Configuration interface. The specific operation of the charging mode is as follows:



03

Common problems and solutions of charging pile

Use of
Charging Pile

- ◆ 1.The main reasons for slow charging may be insufficient power of the charging pile, charging current limit of the electric vehicle, and insufficient power supply of the parking space. Please choose a higher-power charging pile, check the vehicle settings to adjust charging parameters, choose another parking space, or report the power supply issue to the relevant department.
- ◆ 2.When using a charging pile, sometimes you may encounter charging failure and cannot charge normally. This may be due to a charging connector fault, charging pile fault, or charging card issue. Please check the connector for damage and ensure that the plug is firmly inserted. Contact the charging pile management unit for repair or replacement. Report the fault condition for repair or replacement.
- ◆ 3.The charging card may have poor contact, damage, or other issues that cause charging failure. If there is a problem, please replace the charging card or contact the issuing institution of the charging card in a timely manner to resolve the issue. When the charging pile system changes the charging mode, it should restart the power supply to verify that the mode change is successful before use.
- ◆ 4.During charging, it is not allowed to forcefully remove the charging connector, as doing so may cause sparks at the connector and result in safety accidents.
- ◆ 5.The charging ends or the charging ends abnormally, resulting in unsettled charges. Please swipe your card to settle the charges.
- ◆ 6.Please swipe the same card when charging starts and ends.
- ◆ 7.When installing the charging pile, the grounding line should be reliable and free of defects or ungrounded, otherwise it will not be able to charge.

◆ 8.If you need to stop charging in advance, please use the card to stop charging as usual.

◆ 9.If there is a safety accident during the charging process, such as abnormal sound, short circuit of wires, etc., please press the emergency stop button on the panel to disconnect all power supplies and immediately contact the on-site management personnel.

◆ 10.If the display screen is not working, restart the charging pile or contact a professional technician for repair.

◆ 11.If the charging cable, power supply, or interface is damaged, please contact a professional technician for repair and replacement, and conduct regular inspections.

◆ 12.If the gun head is damaged or there are foreign objects in the needle hole, check and clean it. Power off and restart the device every one or two months.

◆ 13.If the card is not working, restart the device, replace the card, and call customer service for advice.

◆ 14.Please switch off the power when the equipment is not used for a long time. Avoid touching the emergency stop button in non-emergency situations.